

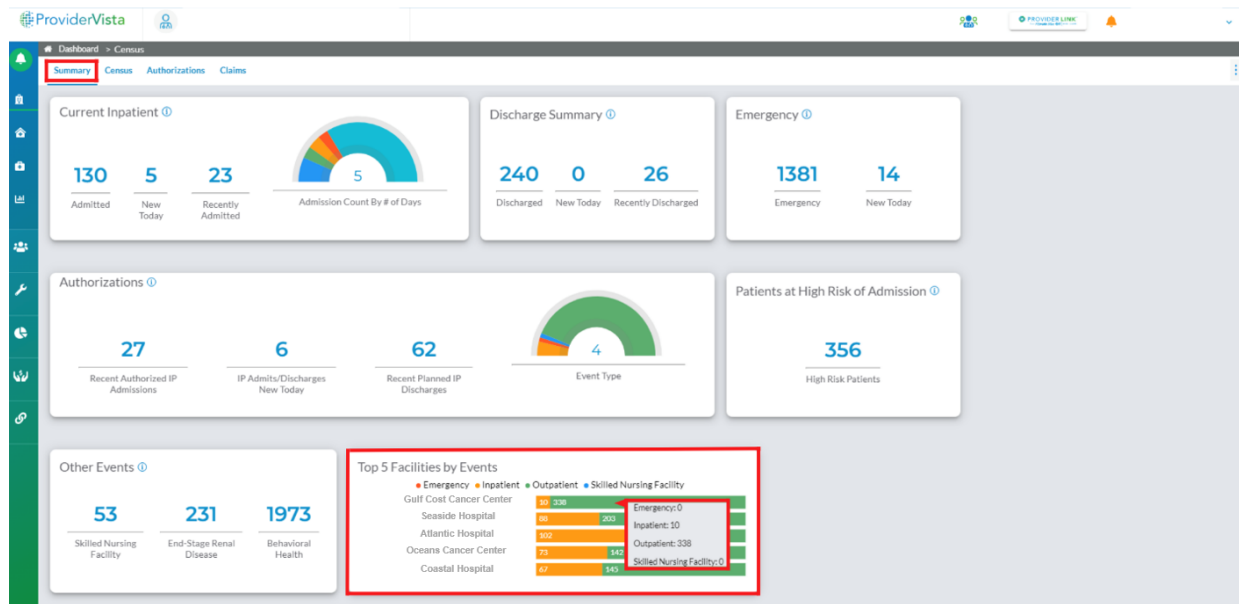
Latest Provider Portal Enhancements: Top 5 Facilities by Events and Triggers

We have made some changes to the Census and Clinical Insights features located in the Portal's ProviderVista (Commercial member data) and Provider Link™ (Medicare Advantage member data) platforms.

Enhancements and where they can be accessed are explained below. ProviderVista screenshots are provided to illustrate the improvements which also pertain to Provider Link.

Enhancement: Top 5 Facilities by Events

In the Census Summary section, we have introduced a chart labeled, **Top 5 Facilities by Events**. This chart allows you to view the five facilities most visited by your assigned members based on authorizations for events such as Emergency, Inpatient, Outpatient, and Skilled Nursing Facility.



Provider Vista > Census > Summary > Top 5 Facilities by Events

The Top 5 Facilities by Events window includes a bar graph which updates multiple times daily and shows the total number of events in each category. Additionally, the chart is equipped with hover over functionality for easy interaction.

Enhancement: Triggers

In the Clinical Insights, a new column labeled **Triggers** has been added to the Care Management and Behavioral Health categories. Triggers communicate an identified opportunity in a member's care that may require a follow up. You may also hover over the Triggers column for additional details. Furthermore, detailed trigger information will be accessible within the expanded section in each selected member's view.

The screenshot shows the ProviderVista SEASIDE HOSPITAL Clinical Insights dashboard. The 'Care Management' tab is active. A table displays member data with columns for Member ID, Member Name, DOB, Network, PCP Name, Inpatient Admissions, LACE+ Score, ER Events, Triggers, Managed By, Care Mgmt. Status, Last Visit Timestamp, and Global Indicator. A tooltip is visible over the 'Triggers' column, listing several clinical conditions:

- ER VISIT WITH ASTHMA DX (PRIMARY)
- ALL OTHER CARDIAC CONDITIONS EXCLUDING PULMONARY EMBOLISM AND OTHER CARDIAC ARRHYTHMIAS
- CARDIOVASCULAR MEMBER WITH HIGH LIKELIHOOD OF BEING IN THE TOP 10% OF TOTAL COSTS WITHIN THE NEXT 12 MONTHS
- ER VISIT WITH COPD DX (PRIMARY)
- COPD MEMBER WITH HIGH LIKELIHOOD OF BEING IN THE TOP 10% OF TOTAL COSTS WITHIN THE NEXT 12 MONTHS

ProviderVista > Clinical Insights > Care Management/Behavioral Health > Triggers

Need Access to our Provider Portal?

Simply ask your Availity^{®1} Primary Access Administrator (PAA) to select the Provider Portal role in your profile. You will find the Provider Portal tile in the Florida Blue or Truli for Health Payer Space.

¹Availity, LLC is a multi-payer joint venture company. For more information or to register, visit [Availity.com](https://www.availity.com).